



# Fall Meeting Registration 2010

Louisiana Physical Therapy Association

September 24-26, 2010

Crowne Plaza  
Baton Rouge, Louisiana

# *Accommodations*

## **Crowne Plaza**

4728 Constitution Avenue  
Baton Rouge, LA 70808  
(225) 925-2244 or (800) 678-4065

### Rates:

\$102.00 per night (Single)  
\$277.00 per night (One Bedroom Suite)

Registrants must make their own room reservations. Please identify yourself with the "Louisiana Physical Therapy Association" to receive the group rate. Please reserve your rooms early. The hotel guarantees the availability of our room block, at the above rates, only for reservations made on or before August 24, 2010. Please call them for availability regardless of when arrangements are made.

# *Eligibility*

Physical Therapists, Physical Therapist Assistants, PT Students and PTA Students

# *Contact Hours*

## 12 hours each:

Clinical Management 2.0: Clinical Management and Integration of the International Classification of Function (ICF) for Individuals with Low Back Pain

Neurological Rehabilitation: It's Not the Same Old Thing Anymore

LSBPTE Approved Provider

# *Registration*

Register early to receive the lower early bird registration rate. Enclose all registration fees with your form. Cancellations may be made through September 8, 2010 without penalty. After September 8, 2010 a \$50.00 cancellation fee will apply up to 48 hours prior to the Meeting, after which all fees are forfeit.

**Exhibit hall passes do not include drink tickets for the Welcome Reception or a luncheon ticket.** Drink tickets can be purchased at the registration desk. Provisions will be made for unregistered members to attend the business meeting, although lunch on Saturday will be served only to registrants and to those who purchase a luncheon ticket.

# TENTATIVE SCHEDULE OF EVENTS

## FRIDAY, SEPTEMBER 24, 2010

9:00am—1:00pm	LPTA Board of Directors' Meeting
1:00pm	<b>REGISTRATION OPENS</b>
1:00pm—5:30pm	Exhibit Setup
2:00pm—4:00pm	Research Presentations
4:00pm—5:00pm	Committee Meetings
5:00pm—6:00pm	LPTA Business Meeting with Open Forum
7:00pm	<b>EXHIBITS OPEN</b>
7:00pm—8:30pm	<b>WELCOME RECEPTION</b> with Exhibitors <b>Quiz Bowl—Sponsored by the Student SIG (Following Reception)</b>

## SATURDAY, SEPTEMBER 25, 2010

7:00am—7:45am	Registration <b>EXHIBITS OPEN</b> Continental Breakfast in Exhibit Hall <b>VOTING OPENS</b>
7:45am—9:15am	Clinical Management 2.0 Neurological Rehabilitation: It's Not the Same Old Thing Anymore
9:15am—10:45am	<b>Exhibit Break</b>
10:45am	<b>VOTING CLOSSES</b>
10:45am—11:45am	Clinical Management 2.0 Neurological Rehabilitation: It's Not the Same Old Thing Anymore
11:45am—1:45pm	<b>LPTA Business Meeting with Lunch</b>
1:45pm—3:45pm	Clinical Management 2.0 Neurological Rehabilitation: It's Not the Same Old Thing Anymore
3:45pm—4:00pm	<b>Break</b>
4:00pm—6:30pm	Clinical Management 2.0 Neurological Rehabilitation: It's Not the Same Old Thing Anymore
6:30pm	PTA Meeting

## SUNDAY, SEPTEMBER 26, 2010

7:45am—9:45am	Breakfast will be in meeting room Clinical Management 2.0 Neurological Rehabilitation: It's Not the Same Old Thing Anymore
9:45am—10:00am	<b>Break</b>
10:00am—1:00pm	Clinical Management 2.0 Neurological Rehabilitation: It's Not the Same Old Thing Anymore

# Clinical Management 2.0: Clinical Management and Integration of the International Classification of Function (ICF) for Individuals with Low Back Pain

## COURSE DESCRIPTION:

Low back pain is fairly common with a lifetime incidence of 80% and one of the most common reasons for patients to seek the services of a physical therapist. In 2001 the World Health Organization (WHO) published the International Classification of Functioning, Disability and Health (ICF)<sup>13</sup>. In 2005 the APTA, Orthopaedic Section made a bold decision to develop a series of evidence based, region specific clinical practice guidelines that would utilize the framework and nomenclature of the ICF. In 2008, the APTA House of Delegates voted unanimously to endorse the WHO International Classification of Functioning, Disability, and Health model.

Therefore we are clearly moving in a direction to utilize the ICF model, but many practitioners are not aware of this model or its benefits to clinical management for the patients they serve. The advantage of the ICF is that it allows for translation across systems and recognizes overlap. In addition, it provides a common nomenclature, so regardless of what philosophical camp a practitioner may come from, the ICF provides a foundational hub for communication within clinical practice and research.

This course will provide clinical integration for the ICF model in conjunction with the latest evidence for PT management of patients with disorders of the low back.

## COURSE OBJECTIVES:

Upon completion of this course, you will be able to:

1. Understand the societal implications and the important role of physical therapy in the management for individuals with low back pain.
2. Integrate functional anatomy, biomechanics, and pathology of the lumbar region with patient management.
3. Evaluate clinical reasoning models commonly applied in healthcare with specific application of the ICF.
4. Interpret standard tests and measures utilized for examination of the lumbar region including outcome measures consistent with current evidence.
5. Understand best current evidence for physical therapy management of individuals with low back pain.

## COURSE INSTRUCTORS:

**Dr. Bob Rowe** is the Residency/Fellowship Program Manager within Brooks Health System located in Jacksonville, FL. In addition to developing and managing the current and future residency/fellowship programs within Brooks he coordinates and promotes professional development opportunities for the Brooks clinical staff. Dr. Rowe also has an Adjunct appointment at the University of North Florida and has presented numerous CEU courses and invited presentations throughout the US.

Dr. Rowe received his PT degree at LSUHSC in 1985 and completed his Master of Health Science in PT in 1994 at LSUHSC. He completed an Orthopaedic Manual PT Fellowship through the Ola Grimsby Institute (OGI) in 1999 and in 2001 completed his Doctor of Manual Therapy degree through the OGI and was recognized as a Fellow of the American Academy of Orthopaedic Manual Physical Therapy (AAOMPT). In May 2007, Dr. Rowe completed his t-DPT through MGH IHP. In January 2009, Dr. Rowe began a three year term as the President of AAOMPT. He began a four year term on the APTA American Board of Physical Therapy Residency and Fellowship Education in July 2008 and served as the Chair of the Orthopaedic Section's Practice Committee from 2004-2010. Dr. Rowe has served on the APTA Referral for Profit Task Force, on the APTA Advisory Panel on Practice, and currently serves on the APTA Manipulation Task Force. Dr. Rowe also currently serves on the Florida Physical Therapy Association Board of Directors. Dr. Rowe has served on the LPTA Board as the Vice-president as well as a Louisiana Delegate to the APTA House of Delegates and is a humble and thankful recipient of the LPTA Dave Warner Distinguished Service Award.

**Dr. A. Russell Smith, Jr. (Rusty)** has 30 years of clinical practice as a physical therapist. He currently is an associate professor and the Chair of the Department of Clinical & Applied Movement Sciences and Academic Coordinator of the Brooks/UNF Clinical Residency & Fellowship.

Dr. Smith received his B.S. in Physical Therapy degree in 1980 from the University of Maryland. He was awarded the Master of Medical Science from Emory University in 1991. Dr. Smith completed his Ed.D. degree in educational leadership in 2004 at the University of North Florida. Dr. Smith has extensive clinical experience in outpatient orthopedics, acute care, geriatrics, and occupational health settings. In 1993 Dr. Smith received his American Board of Physical Therapy Specialists (ABPTS) Orthopedic Clinical Specialist Certification with recertification in 2002. He also received certification as a Manual Therapist in 1986 from the Institute of Physical Therapy and was recognized as a Fellow of the American Academy of Orthopedic Manual Physical Therapy in 1999 with recertification in 2009. His research interests include manual therapy, the use of technology in education, clinical reasoning models, and clinical outcomes.

# Neurological Rehabilitation: It's Not the Same Old Thing Anymore

## COURSE DESCRIPTION:

This course will review the foundations of current motor control and motor learning principles. The major evolving theories of motor control and motor learning will be covered briefly emphasizing how to implement these concepts into your current practice with application. Current neurological clinical techniques will be discussed with reference to their bases with current theory. We will explore a framework designed to link the science of motor control and motor learning with physical therapy analysis of, and interventions for, movement dysfunction in individual with neurological deficits. In addition, the International Classification of Function model will be used to describe currently recommended outcome measures for individuals with neurological deficits. Using case reports/ patient video demonstration, we will discuss the use of established clinical interventions based on these concepts and their impact on the physical therapy management of patients and clients with neurological deficits.

## COURSE OBJECTIVES:

Upon completion of this course, you will be able to:

1. Identify and discuss the theories, assumptions and limitations underlying historical and current models of motor control and motor learning as they are applied in the clinical practice of Physical Therapy.
2. Identify and describe the anatomical structure and physiological function of the nervous, muscular, and skeletal systems as related to normal and abnormal movement and learning.
3. Utilizing peer-reviewed research from the fields of neuroscience, motor control and motor learning, and neurorehabilitation outcomes, discuss the rationales underlying your assessment, prognosis, treatment plan and therapeutic interventions for the patient with more motor dysfunction.
4. Distinguish between learning and performance, design interventions to facilitate learning.
5. Critically discuss the basic issues in motor learning including definition and stages
6. Using current theories of motor control and motor learning, select/develop therapeutic interventions appropriate to the prevention and remediation of specific neurological deficits.

## COURSE INSTRUCTOR:

**Dr. Tinsley, PhD, PT, NCS** received her Master's in Physical Therapy from Texas Woman's University in 1986 and her PhD in Neuropharmacology from Louisiana State University Health Sciences Center-Shreveport in 1999. She is an Associate Professor in the Department of Rehabilitation Sciences at Louisiana State University Health Sciences Center-Shreveport. Dr. Tinsley teaches medical pharmacology in the School of Allied Health Professions, School of Graduate Studies and School of Medicine. Dr. Tinsley is an APTA Board Certified Neurologic Physical Therapist and has presented nationally at APTA conferences as well as numerous continuing education seminars on the topic of pharmacology and rehabilitation. She currently serves as Chair of the Stroke SIG, Neurology Section, APTA. She has published in the area of pharmacology and rehabilitation and is an author of a pharmacology textbook for McGraw-Hill Publishing. She has an active clinical practice in the area of neurological rehabilitation as well as an active clinical research agenda. She has been honored as a Visiting Scholar at the renowned Valens Rehabilitation Clinic in Valens, Switzerland. Dr. Tinsley has been a member of the APTA since 1989.

# GENERAL INFORMATION

## CONTINENTAL BREAKFASTS

Continental breakfast will be served on Saturday and Sunday morning. Saturday morning breakfast will be in the Exhibit Hall, Sunday morning the breakfast will be in each classroom.



## COMMITTEE MEETINGS

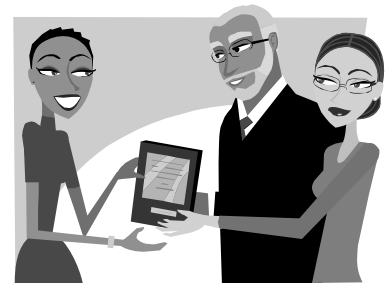
Committee Meetings are scheduled on Friday, from 4:00pm—5:00pm.

## RESEARCH PRESENTATIONS

Research presentation will be on Friday from 2:00pm—4:00pm.

## BUSINESS MEETING AND LUNCH

The Business Meeting and Luncheon will be held on Saturday from 11:45am—1:45pm. The purpose of this meeting is to inform you of the accomplishments LPTA has made over the past year and the direction of LPTA. Awards will be presented for Friend of Physical Therapy, Louisiana Physical Therapy Hall of Fame, Physical Therapy Assistant Distinguished Service Award, Dave Warner Distinguished Service Award. Election results will also be announced!



## 2nd ANNUAL LPTA QUIZ BOWL CHALLENGE!

### ORGANIZED BY THE STUDENT SIG

**Who:** You and your 3 smartest friends (Open to anyone— PTs, PTAs, Students)

**When:** Friday, September 24, following the Welcome Reception

**How:** Put on your creative hat and come up with your best team name and spirited attire.

Go to [www.lpta.org](http://www.lpta.org) and click on “Student SIG” for application form and rules of play.

Mail in your application by September 3rd to:

Ashley Henk  
2805 Bolch Street  
Stonewall, LA 71104

Bring your application fee (\$40/team) and your game face.  
(\*Proceeds will go to PT-PAC.)

## Louisiana Physical Therapy Association Fall Meeting

Name: \_\_\_\_\_

Spouse/Guest's Badge Name (if applicable): \_\_\_\_\_

Company: \_\_\_\_\_

Business Address: \_\_\_\_\_

Street

City

State

Zip

Business Phone: (\_\_\_\_\_) \_\_\_\_\_

Email Address: \_\_\_\_\_

Home Address: \_\_\_\_\_

Street

City

State

Zip

Home Phone: (\_\_\_\_\_) \_\_\_\_\_

Licensure:      **PT**      **PTA**      **PT Student**      **PTA Student**

Membership:              **APTA/LPTA Member**                      **Non-member**

**PLEASE MARK THE COURSE YOU WILL ATTEND:**

\_\_\_\_\_ **Clinical Management 2.0**

\_\_\_\_\_ **Neurological Rehabilitation**

**REGISTRATION FEES:**

Early Bird

Regular

Postmark by September 8

After September 8

PT Member	\$315	\$340
PT Non-Member	\$390	\$440
APTA Life Member	\$75	\$85
PT Assistant Member	\$315	\$340
PT Assistant Non-member	\$390	\$415
Student Member	\$75	\$85
Student Non-member	\$105	\$115
Spouse/Guest*	\$40	\$45

\* includes social events and exhibits

Luncheon Ticket Only (for non-registrants)	\$25	\$25
Saturday Only (PT and PTA members)	\$200	\$210
Saturday Only Non-Member	\$225	\$275
Exhibits Only Pass-Member	\$20	\$20
Exhibits Only Pass-Nonmember	\$45	\$45

**Total Amount Enclosed: \$** \_\_\_\_\_

*\*\*\$10 will be added for on-site registrations.*

Credit Card: (Circle one)    American Express    Discover    MasterCard    Visa

Card Number: \_\_\_\_\_

Expiration Date: \_\_\_\_\_

Cardholder's Name (Please print): \_\_\_\_\_

Signature: \_\_\_\_\_

Credit card registrations may be faxed in or mail registration form

Louisiana Physical Therapy Association

8550 United Plaza Blvd., Suite 1001, Baton Rouge, LA 70809

Phone: 225-922-4614      Fax: 225-408-4422

Email: office@lpta.org

with check payable to LPTA to:



Check here if you have a disability and may require an accommodation. You will be contacted to discuss your special needs.



8550 United Plaza Boulevard, Ste. 1001  
Baton Rouge, LA 70809